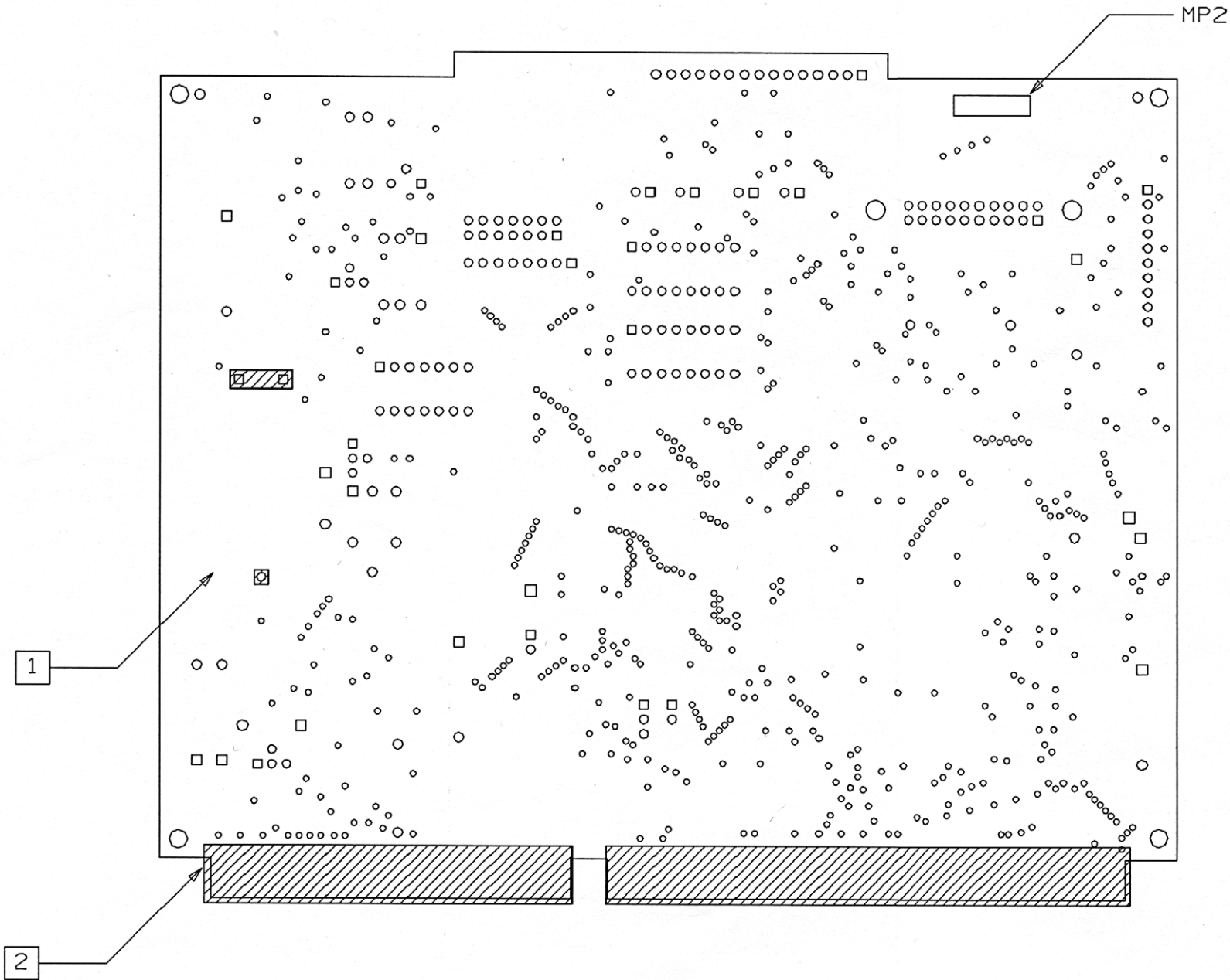


| SYM | REVISIONS | APPROVED | DATE |
|-----|-------------|------------------|---------|
| A | SEE SHEET 1 | B. BOURGEOIS/SB | 5/11/94 |
| B | SEE SHEET 1 | B. BOURGEOIS/SB | 5/26/94 |
| C | SEE SHEET 1 | B. BOURGEOIS/CAP | 8/8/94 |



NOTES: UNLESS OTHERWISE SPECIFIED

- 1 LOAD BATTERY AFTER "AUTO-TEST".
- 2 MASK AREAS SHOWN HATCHED ON BOTTOM SIDE BEFORE FLOW SOLDER.

BOTTOM SIDE

HP PROPRIETARY
 THIS DOCUMENT CONTAINS CONFIDENTIAL,
 PROPRIETARY INFORMATION THAT IS
 HEWLETT-PACKARD (HP) PROPERTY.
 DO NOT DISCLOSE TO OR DUPLICATE FOR
 OTHERS EXCEPT AS AUTHORIZED BY HP.

UNLESS OTHERWISE SPECIFIED,
 DIMENSIONS ARE IN INCHES.
 TOLERANCES: XX.XXX ±.010
 XX.XX ±.02
 THIRD ANGLE
 PROJECTION
 DO NOT SCALE THIS DRAWING

MARY MARTIN
 DRAWN BY
 B. BOURGEOIS
 ENGINEER/CHECKER
 B. BOURGEOIS
 RELEASE TO PROD.
 SUPERSEDES DMG.

3/3/93
 DATE
 3/3/93
 DATE
 5/11/94
 DATE
 ASSEMBLY, PWB
 CONTROLLER

a5baq325
 FILENAME
 NONE
 SCALE
 SHEET 2 OF 2
 08901-60325
 PART NUMBER
 D-08901-60325-2



TITLE